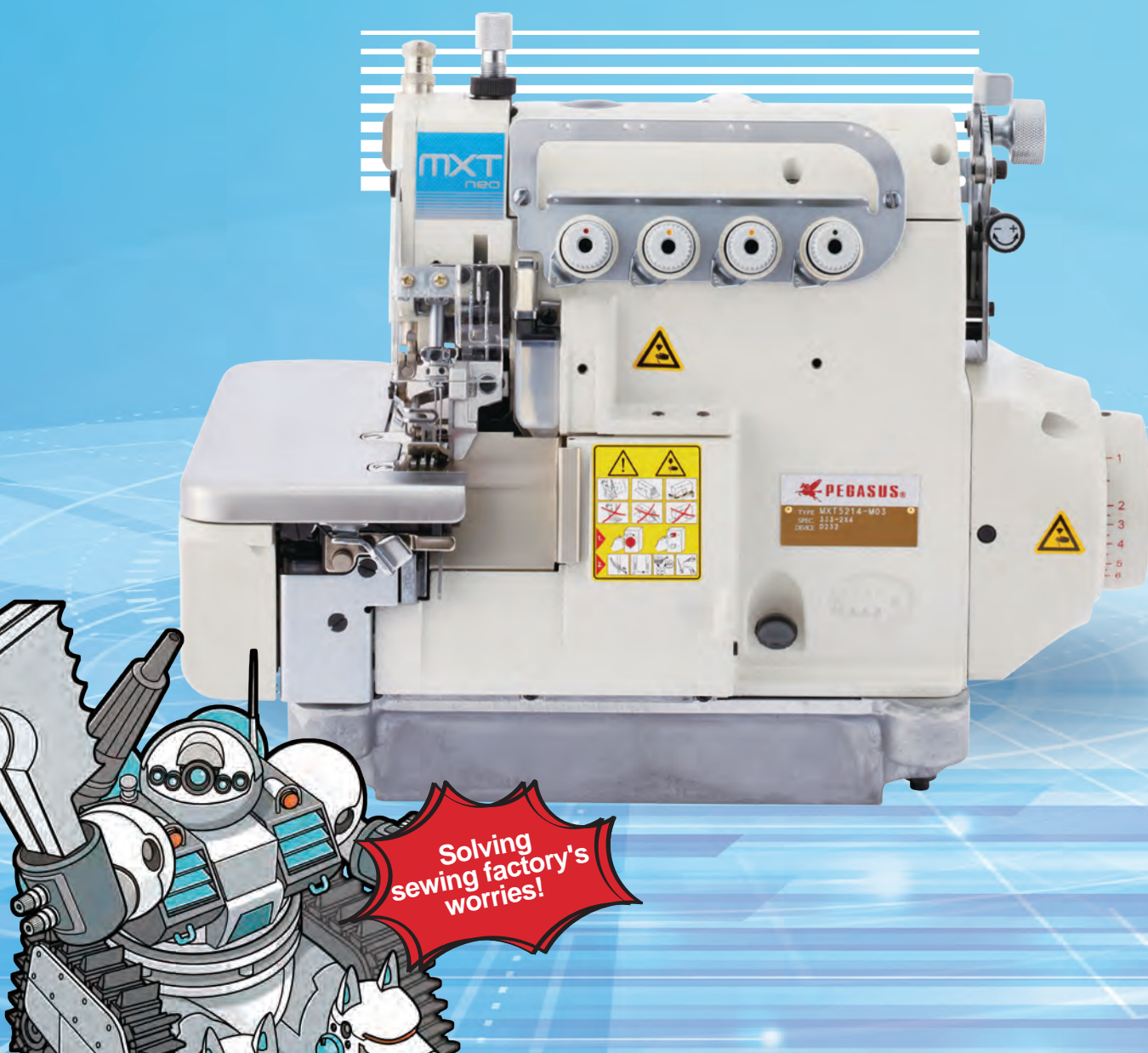


# MXT series

**MXT3200** Variable top feed,safety stitch machine / **MXT5200** Variable top feed overlock

# mxt

neo

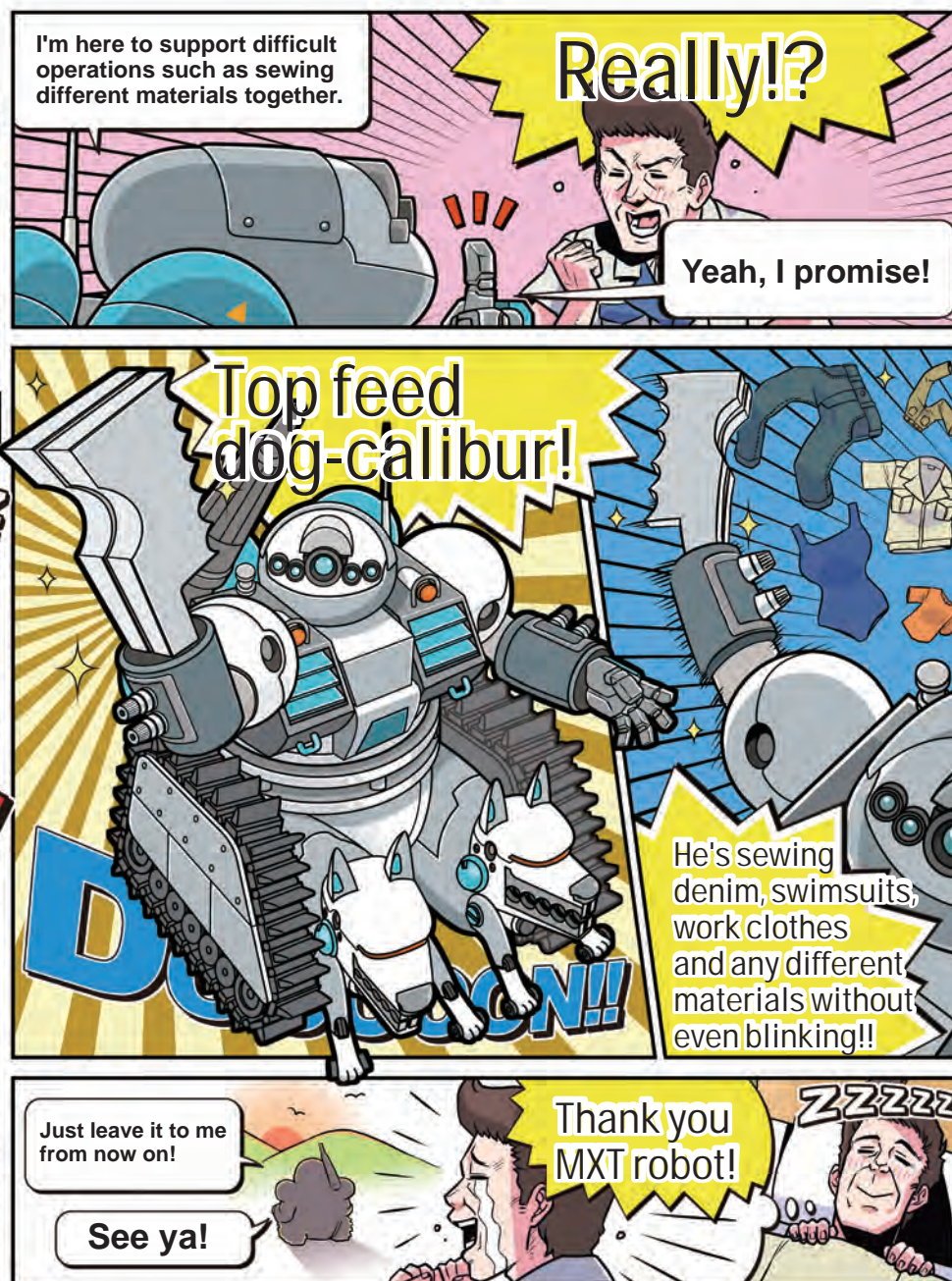
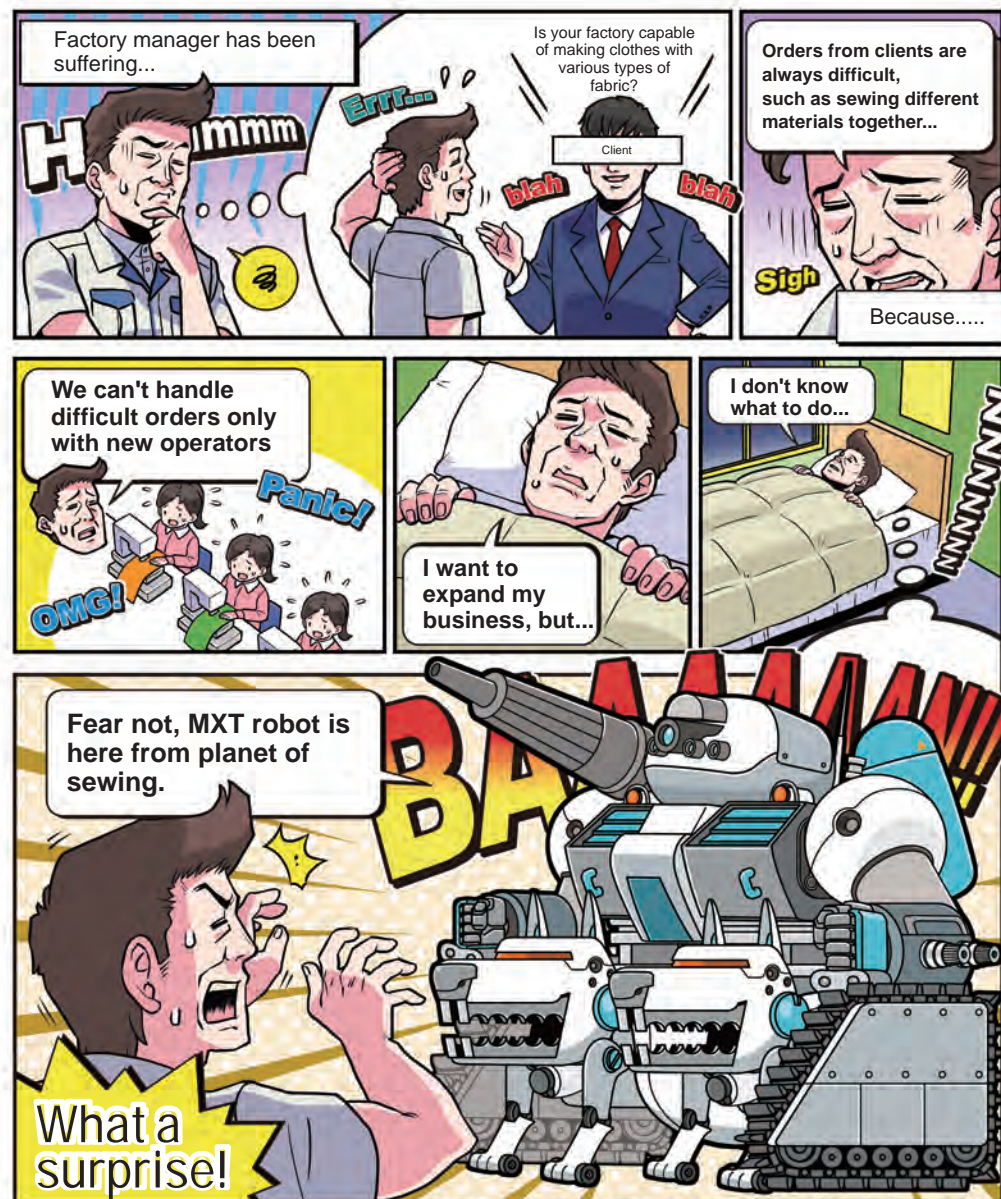


**PEGASUS®**



Solving sewing factory's worries!

# MXT Sewing robot come to the rescue!



## Super easy adjustment of stitch length!

All you need to do is push the button and turn the machine pulley.



## Avoid stitch skipping and broken material!

HR device reduces the heat generated on the needle and smooth the movement of the thread, it will give stable seams.



## Max speed!

MXT 6700sti/min.



## Pegasus original \*DDM!

- Designed and manufactured completely by PEGASUS
- Certified by CE as all-in-one type direct drive motor
- Compact appearance with exceptional ease of operation

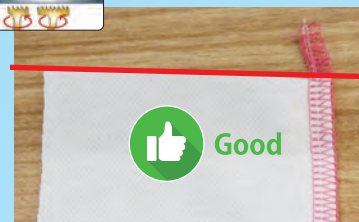
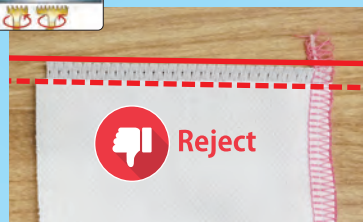
\*Direct Drive Motor





## Ply shifting

In case of sewing slippery fabrics together, misalignment occurs when the bottom fabric advances first and the top fabric lags behind.

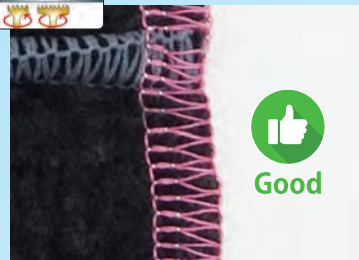
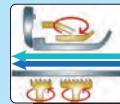
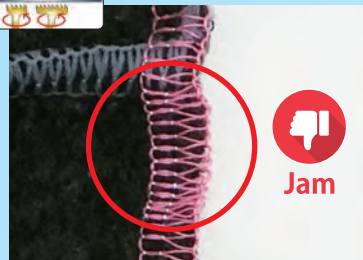


TOP FEEDING

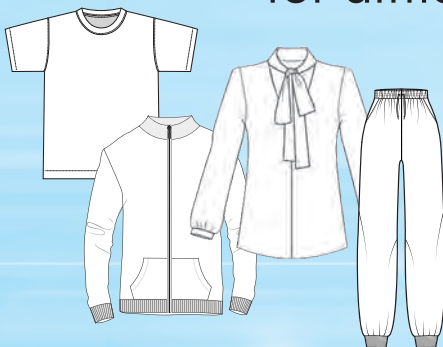


## Seam jamming

Effective for thick cross seams that frequently cause jamming



MXT! The solution  
for difficult fabric and operations!

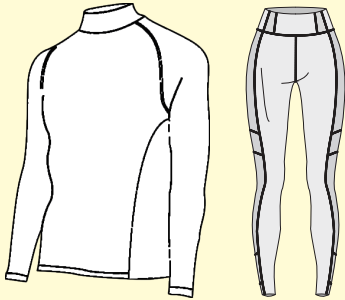


# MXT series

**MXT3200** Variable top feed,safety stitch machine / **MXT5200** Variable top feed overlock

All you need is MXT,  
for thin to thick, even the knit,  
woven and super thick denim fabric.

— High stretch garments —

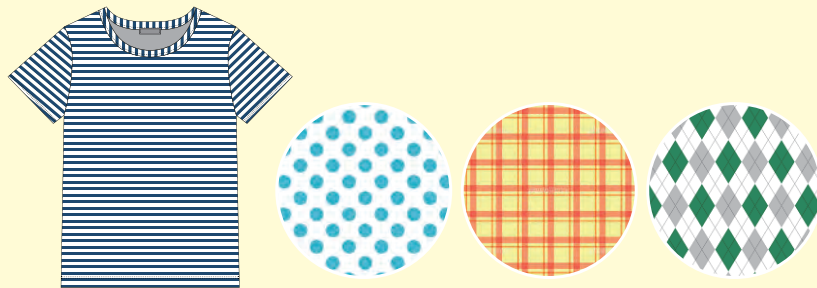


— Stitching over thick areas and cross seams —



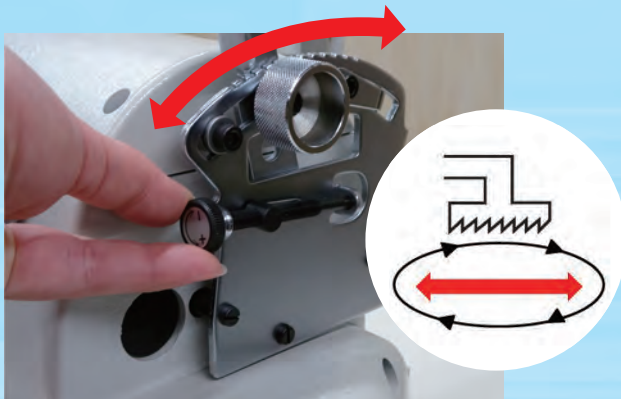
MXT3244-A04

— Matching designs of patterned fabric —



Super easy top  
feed adjustment!

Just loosen the knob and adjust it as you like.  
Also adjustment knob allows fine tuning.



Hard to leave presser  
foot marks!

Can adjust the float of the presser foot.



Option

- KS

Vertical type vacuum thread chain cutter
- PL

Presser foot lift
- KH

Flat type vacuum thread chain cutter
- LC

Pneumatic lint collector



Seam	Application	Fabric weight	Subclass	No.of needles	No.of threads	Needle space (mm)	Overedge width (mm)	Max.stitch length (mm)	Diff. feed ratio	Presser foot lift (mm)	Max.speed (sti/min)	Needles	Option
①	Plain seaming	Medium to heavy	MXT3216-03/333	2	5	5	5	3.8	0.7-2	5.5	6,700	DCx27 #14(90)	KH/PL/LC
②	Plain seaming	Medium to heavy	MXT3244-03/333	3	6	3	2 + 4					DCx27 #11(75)	
		Heavy to extra heavy	MXT3244-A04/435K	3	6	5	3 + 4	5.0	0.8-1.5	7	6,300	DCx27 #21(130)	
③	Plain seaming	Medium to heavy	MXT5214-M03/333	2	4	2	4	3.8	0.7-2	5.5	6,700	DCx27 #9(65)	KS/PL/LC

PEGASUS CO., LTD.

5-7-2 Sagisu Fukushima-ku, Osaka 553-0002 Japan TEL : +81-6-6458-4739 FAX : +81-6-6454-8785

© 2022 PEGASUS CO., LTD. Catalog NO.103145① November 2024.

-Specifications and appearance are subjected to changes without notice.  
-Read the instruction manual before operating the machine to ensure safe usage.  
-Photos for illustration purpose. They may not represent actual operating conditions and/or displayed optional parts.

