



PEGASUS

FS700P SERIES

4-needle, feed-off-the-arm,
interlock stitch machine for flatseaming



FS700P SERIES

**Completely enclosed type, 4-needle, feed-off-the-arm,
interlock stitch machine for flatseaming**

The world first, completely enclosed type



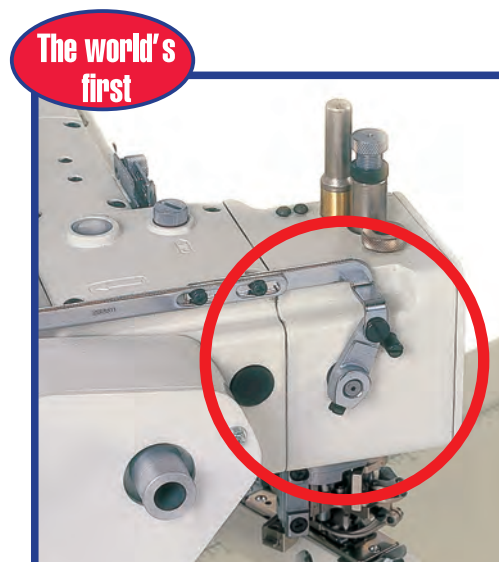
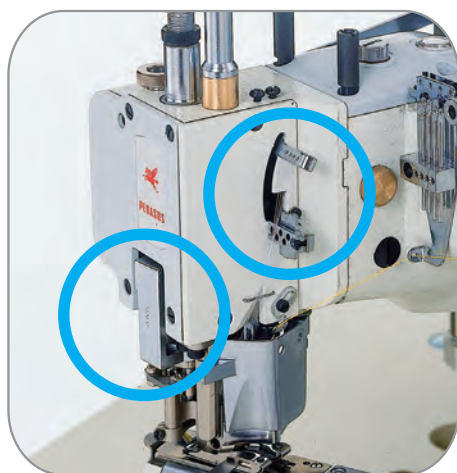
*Optional equipment **PP** **PL** **LC**

Point

01

"Oil Barrier" type machines that completely block oil leakage. Adopting PEGASUS' unique oil barrier technology!

- FS700P Series (4-needle, flatseamer) adopts the world's first machine bed equipped with a completely enclosed needle drive mechanism.
- FS700P Series is keeping high-quality and consistent stitches, and protects your important sewn products against oil stains, thanks to this high "Oil Barrier" effectiveness.



Point

02

Achieves neatly finished products with no yarn distortion on the fabric

- Thanks to Pegasus' unique presser foot with the groove on its underside, the machines easily sew the difference on the cross seam sections of the overlapped areas.
- Therefore, the overlapped areas in tape binding and lace attaching operations on the fabric, such as briefs and panties, are flatly and beautifully finished, so they feel gentle on the skin without any uncomfortable touch. In addition, the wide knife design increases the amount of fabric cut per stitch. It can avoid fabric being pushed back towards the front during cutting and reduce fabric flowing at the step.



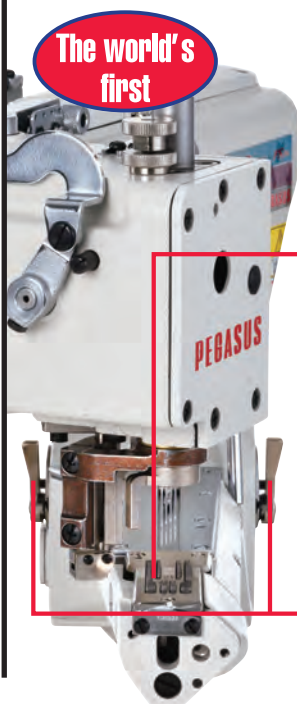
Point

03

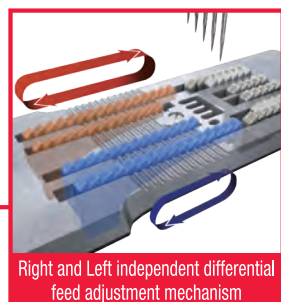
Ideal for sewing with different elasticity

LaRgo

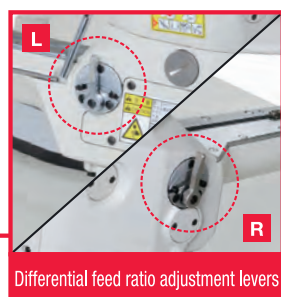
* Only for the FS700P-A series



The world's first

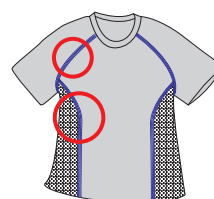
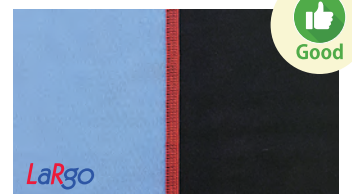
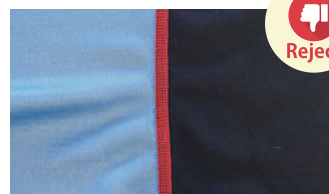


Right and Left independent differential feed adjustment mechanism



Differential feed ratio adjustment levers

- The differential feed ratio can be adjusted separately, in order to respond to operations in which the machine is used to sew right- and left-hand side fabrics that have varying degrees of stretchability, and/or curved lines.
- The operator can handle the right- and left-hand side fabrics easily, without worrying about the different stretchability. The LaRgo achieves uniformly and beautifully finished products, regardless of the skill of the operator. These features reduce the operator's burden drastically, and also help increase productivity.



LaRgo

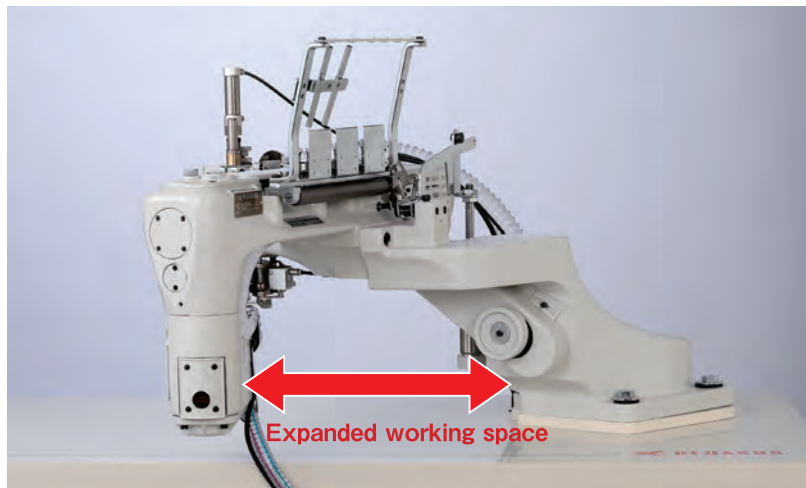
The letters L and R on the LaRgo come from the initial letters of "Left and Right" included in the description of the world's first left and right independent differential feed adjustment mechanism. In addition, the name "LaRgo" can be associated with a term in musical terminology that means "to play with the sound flowing."

Point

04

Safer and more comfortable

- The space between machine body and the rest board has been widened to provide a larger working space for handling fabric comfortably. There is also much more space for fabric parts on the left and right side, which makes sewing operations smoother.
- The hand pulley is designed not to turn around during sewing, which makes sewing operations safer. The hand pulley is clutch-type. It can be operated normally by pushing-in and turning, when move it manual for maintenance, etc.



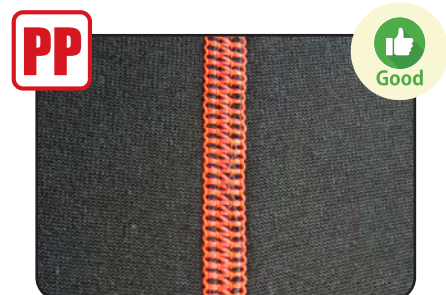
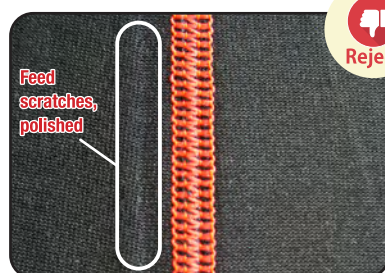
Point

05

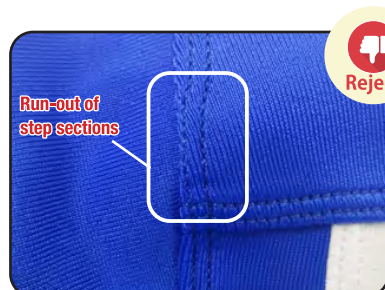
Options for even more consistent quality

Pneumatic presser foot pressure regulator (PP) * Refer to the next page.

Countermeasures
for feed damage



To prevent runout
(meandering) of
stepped sections



Close-up

Easy maintenance

Timing adjustments of the needles and the loopers can be made from side of the arm bed. Differential feed ratio adjustments can be easily made by the lever.



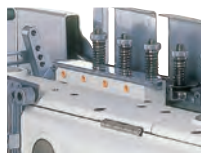
Various kinds of features that increase quality

Thanks to the adoption of a fine adjustment mechanism for the presser foot lift, the clearance between the presser foot and the needle plate can be adjusted easily with the adjustment nut, according to the fabric. In addition, the presser foot pressure can also be adjusted finely. These features eliminate seam jamming and/or fabric damage by the feed dog, achieving neatly finished products.



Needle thread lubricating device

The HR device helps the needle thread run smoothly through the machine, forming uniform stitches.



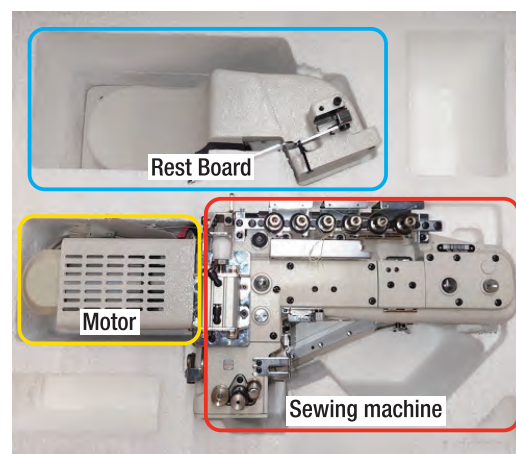
Operator-friendly, safe design

The driving parts of the looper are completely covered. The set screw for the cylinder cover is designed to be out of the way of the sewing.



Resource-saving package (tested for durability)

ALL-in-one packaging with sewing machine, rest board, motor, and equipment assembled and packed in one box. It is possible to set-up speedy.



* Excluding some areas

FS700P Devices

Pneumatic presser foot pressure regulator



- Thanks to the air-controlled presser foot pressure, the uniform and minimum possible presser foot pressure is always achieved according to the fabric and fabric weight being used. This feature prevents seam jamming on cross seam sections, damage to the fabric, and shining appearing on the fabric, contributing greatly to the stabilization and increase in quality. In addition, the presser foot pressure can be expressed in numerical form. Therefore, the presser foot pressure that is correct for each fabric can be reproduced easily and immediately.
- Thanks to the air-controlled engagement pressure of the knives, the engagement pressure is reduced, compared to conventional knives. This feature dramatically increases the durability of the knives.



Thread chain cutter



A pneumatically operated device that cuts a thread chain. No scissors are needed. Operating efficiency is dramatically increased.



Waste collector



This pneumatic device sucks up cutting waste generated during sewing, providing clean and comfortable working conditions.



Presser foot lift

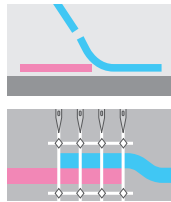
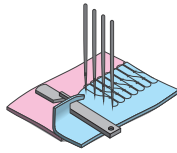


Pressing the treadle with the heel raises the presser foot. Ease of operation decreases operator fatigue.

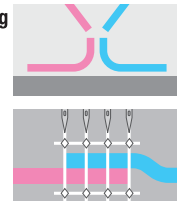
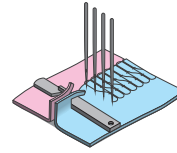
Full line of subclasses

These subclasses respond to the diversified needs of the market, from underwear to garments made of fleece. Two types of cutting for the fabric edge are available, single and double edge trimmings.

■ Single edge trimming
(right-side edge trimming)



■ Double edge trimming



FS700P Subclasses

Trimming	Application	Fabric weight			Machine model
		Light	Medium	Heavy	
Single edge Trimming	Joining shoulders of T-shirt and underwear, Sewing files of briefs.	Light to Medium			FS701P-G0 FS701P-(W)G1 FS701P-A-G0 <i>LaRgo</i> FS701P-A-(W)G1 <i>LaRgo</i>
	Sewing files with attaching tape of briefs.	Light to Medium			FS701TP-G0
Double edge Trimming	Underwear and T-shirt.	Light			FS703P-G2 FS703P-A-G2 <i>LaRgo</i>
	Sport wear.	Light to Medium			FS703P-(W)G2B FS703P-A-(W)G2B <i>LaRgo</i>
	Swimming wear and sport wear.	Light			FS703P-(W)G2C FS703P-A-(W)G2C <i>LaRgo</i>
	Attach crotch pieces and sewing files of boxer briefs and knit trunks.		Medium		FS703P-(W)G2D FS703P-A-(W)G2D <i>LaRgo</i>
	Joining shoulders of T-shirt and underwear, sewing files of briefs.		Medium to Heavy		FS703P-G3
	Joining shoulders of T-shirt and underwear, sewing files of briefs. Joining crotches of briefs without braided elastic inserts, etc.			Heavy	FS703P-G4
	Joining crotches of briefs without braided elastic inserts, etc. Joining crotches of panties.			Heavy	FS703AP-G4
	Joining crotches of briefs with braided elastic inserts, wet suits.			Heavy	FS703BP-G4
	Joining shoulders of T-shirt and underwear, sewing files of briefs. Joining crotches of briefs without braided elastic inserts, etc. Side seaming to sport wear.	Light to Medium			FS713P-G0 FS713P-A-G0 <i>LaRgo</i>

* Both the FS713P-G0 and the FS713AP-G0 include the exclusive presser foot that helps the machine feed the fabric excellently.

* Applications and/or fabric weights provide a rough indication, so how to sew the fabric depends on each sewn product.

Ordering information

FS7 0 3 P — A — W G2 × 4 52 — 1 B

① ② ③

④

⑤

⑥

⑦

⑧

⑨

⑩

※ Additional

- | | | | | |
|---|---|--|---|---|
| <p>① Length of presser foot
0: 38mm
1: 48.5mm</p> <p>② Trimming (fabric edge)
1: Single
3: Double</p> | <p>③ Shape of presser foot
A,B: Step of presser foot
T : For attach tape operation</p> <p>④ A: Right and left independent differential feed adjustment mechanism <i>LaRgo</i></p> | <p>⑤ W: Wide knife</p> <p>⑥ Groove of presser foot
See above</p> <p>⑦ No. of needle
4: 4 needles</p> | <p>⑧ Needle space
52: 5.2mm
60: 6.0mm</p> <p>⑨ Feed dog teeth pitch
1: 1.25mm
*standard 1.8mm</p> | <p>⑩ A: Different feed dog 5 rows
B: Long main feed dog</p> |
|---|---|--|---|---|

FS700P Series Common specifications

No. of needles : 4 needles (a retainer needle is not included)
No. of threads : 6 threads
Needle space : 5.2mm, 6.0mm
Main feed dog movement amount : 1.3mm - 2.5mm
Diff. Feed ratio : 1:0.5 - 1:1.5
Presser foot lift : Up to 5.5mm
Max. machine speed : 4,200 sti/min

* Details of the specifications vary according to each subclass and sewing conditions.

* Max.machine speed of FS700P-A series *LaRgo* is 3,800 sti/min.

PEGASUS CO., LTD.

5-7-2 Sagisu Fukushima-ku, Osaka 553-0002 Japan
TEL : +81-6-6458-4739 FAX : +81-6-6454-8785

-Specifications and appearance are subjected to changes without notice.

-Read the instruction manual before operating the machine to ensure safe usage.

-Photos for illustration purpose. They may not represent actual operating conditions and/or displayed optional parts.



FS700P SERIES



4-needle, feed-off-the-arm, interlock stitch machine for flatseaming