



PEGASUS

FW-S series

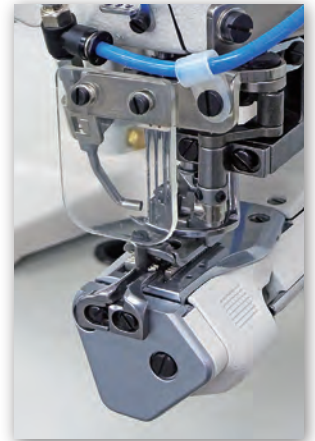
The shape of the machine makes all the difference. So easy to use to get such a perfect finish!

The FW-S series is a specialist for covering cylindrical goods and provides precise seams that feel gentle and easy.

The slender bed reaching toward the front edge is most suitable for covering small goods and provides excellent ease of operation.



Easy-to-operate small circumference cylinder bed



The guide and gauge parts achieve correct covering

FW-S series

Feed-up-the-arm, cylinder bed, interlock stitch machines for covering

FW603S :

Feed-up-the-arm, cylinder bed, interlock stitch machines for covering

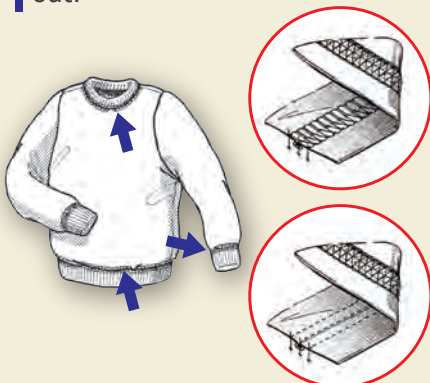
FW204S :

Feed-up-the-arm, cylinder bed, interlock stitch machines for attaching tape

The subclasses that are most suitable for your sewn products

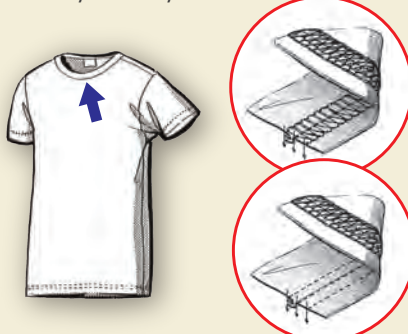
FW603S-F : For flattening out

Most suitable for covering operations on medium to heavy weight fabrics such as sweatwear, training wear, etc. Overlock seams are flattened out.



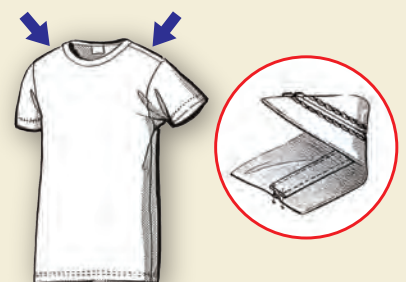
FW603S-G : For folding over

Most suitable for covering light to medium weight fabrics, such as T-shirts and sportswear. The FW-S series covers overlock seams while flattening them out tightly onto the fabric. This feature is most suitable for sewn products that directly touch your skin.



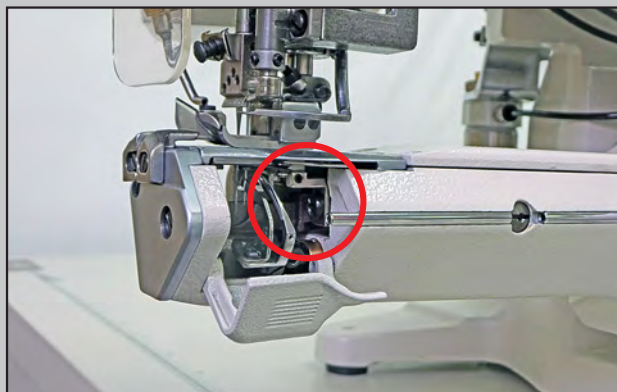
FW204S-A : For attaching tape

For attaching tape to the left shoulder, rear of neck opening on the back, and right shoulder on T-shirts and similar garments. The small circumference cylinder bed provides enough working space, therefore tubular and cylindrical goods can be handled easily.



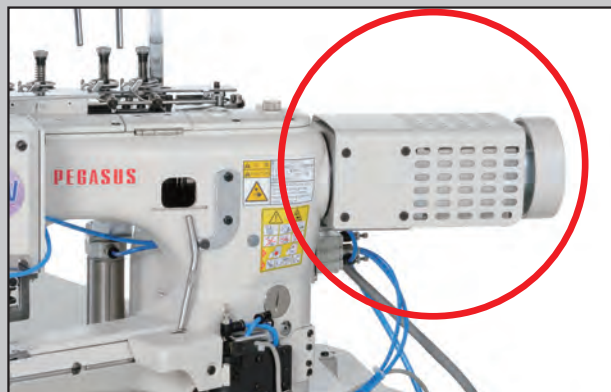
Feed bar equipped with an oil seal

This feature protects your important sewn products from oil stains, dramatically contributing to increase productivity.



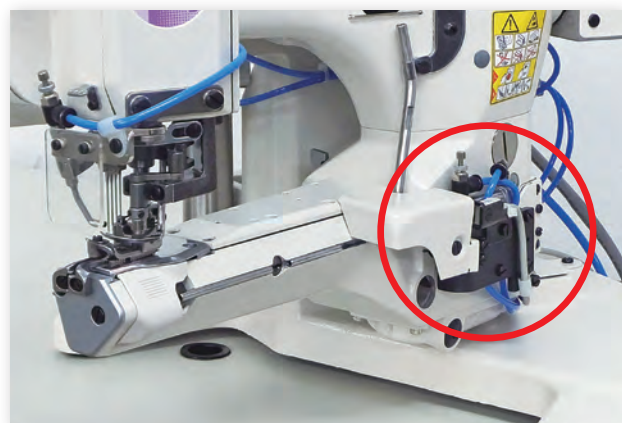
Equipped with a DD (direct drive) servo motor

The machine starts and/or stops properly, and reaches high speed quickly, increasing production. In addition, the space under the machine table is comfortably arranged. Thanks to these features, the operator feels less stress when conducting his/her operations, increasing production



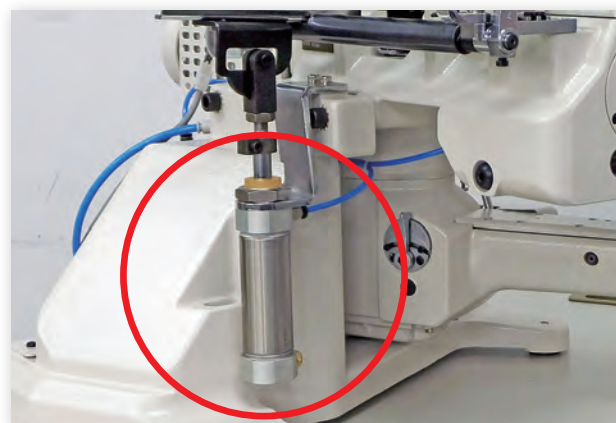
Devices

UT Thread trimmer






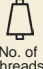
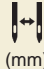

Threads are easily cut, by pressing the treadle with heel. This feature greatly enhances operator efficiency and allows for increased production. (Except for FW204S series)

PL Presser foot lift



Pressing the treadle with heel raises the presser foot. This device is easy to use, thus decreasing operator's fatigue and increasing productivity.

Subclasses

		 (No. of needles)	 (No. of threads)	 (mm)	 (sti/min)	Option	Remarks
Covering	FW603S-FB	3	5	5.6	4,500	Thread trimmer : UT Presser foot lift : PL	Flattening out overlock seams
	FW603S-GB	3	5	5.6	4,500		Folding over overlock seams
Attaching tape	FW204S-A	2	4	6.4	4,500	Presser foot lift : PL	For attaching folded tape (with binder)

PEGASUS CO., LTD.

5-7-2 Sagisu Fukushima-ku, Osaka 553-0002 Japan
TEL : +81-6-6458-4739 / FAX : +81-6-6454-8785

-Specifications and appearance are subjected to changes without notice.
-Read the instruction manual before operating the machine to ensure safe usage.
-Photos for illustration purpose. They may not represent actual operating conditions and/or displayed optional parts.

